

Boardwalk

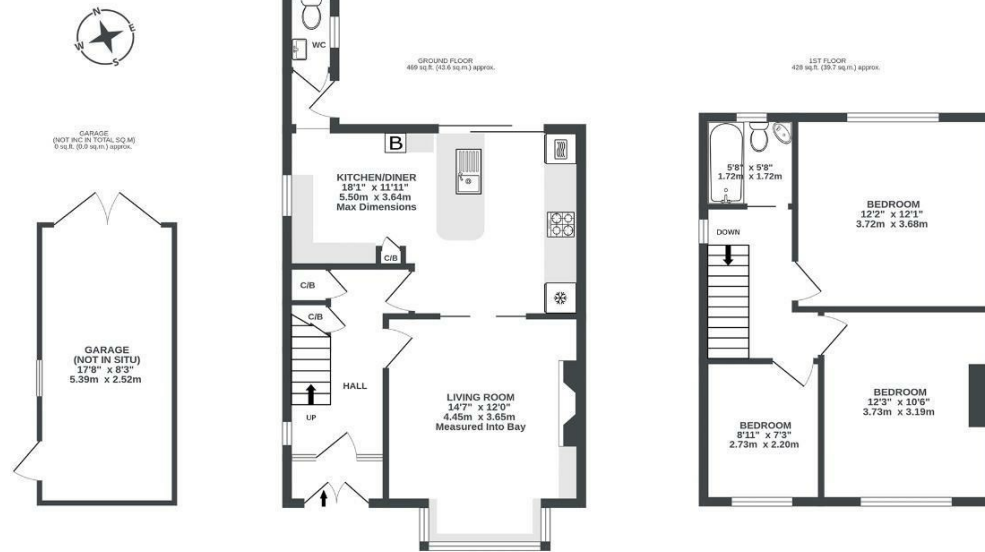
# Allison Road

, BRISTOL

## Allison Road

BRISLINGTON

APPROXIMATE FLOOR AREA  
83.3 SQM / 897 SQFT



Illustrations are for reference purposes only, measurements are approximate, not to scale.



Boardwalk

# Allison Road , BRISTOL

£

£450,000



BS4 4PW

z z z

3 Bedrooms



2 Bathrooms

*" We love the location, it's so near the bus stop and Sandy Park and a four minute walk to school. Also the beautiful Brislington brook and woods at the end of the road! The house itself is lovely and light with it's big windows and it's open plan living is perfect for family life. We love lighting the fire and cosying up on a cold winters day. "*

